

POWERMONKER

MANUAL

Mongering Justice

The captain sat brooding in his chair, braziers flaring beside him. A frigid, howling wind buffeted his tent, causing its poles to creak. The restless air surged under the tent flaps and made the flames in the braziers dance, as the guilty have “danced” at the end of the captain’s rope.

Every fortnight eve the captain passed judgment on any soldiers who had broken his laws; this was such a night. Two guards dragged in the first prisoner, who averted his eyes and stood shivering and sullen. An officer read the charge against him from a long scroll. “My liege,” he intoned, “this miserable wretch is charged with committing the heinous offense of copying software in an unauthorized manner.”

The captain fixed a wintry glare upon the felon. “This is indeed a reprehensible offense,” the captain growled. “Perhaps you could elaborate so I might best levy justice.”

The officer continued. “As is known by all upright men, illegal copies of software, even if made for one’s friends, cause software producers to raise their prices, since they are no longer able to sell enough software to cover their costs. Before thou knowest it, everyone is paying more for software, and some smaller companies cease to be.

“PowerMonger was produced through the efforts of many honest yeomen whose costs can be recovered only through retail sales. Duplicating this or any other game without authorization raises the cost of software for all legitimate users.

“Copying PowerMonger for any reason other than making backup copies is a violation of international copyright laws. Electronic Arts, as a member of the Software Publishers Association, supports the industry’s effort to fight illegal copying of personal computer software.”

The captain’s face was livid as he said, “I have heard enough! Hanging is too kind for this dog. I sentence him to...tickling!” The condemned shrieked for mercy, but he would find none after such a crime. Later, his giggling went on till dawn. Few slept well that night.

Bullfrog

The philosophy behind our games is that we only design what we want to play. If we don't enjoy them then how can we expect anyone else to? We wanted to play a game like PowerMonger and it didn't exist. So we had to make it.

The idea for PowerMonger came while Populous was being developed. We wanted to design a game that changed and played differently every time you played it. We wanted to create a game in which you could feel as though you were inside a world, and playing as part of that world.

But how do you actually create a simulation of the real world? It turns out that you need to approximate almost everything. For example, in PowerMonger, as in the real world, you go out and make food. Although you can see the farmers plowing in the field, you can't see them blowing their noses. In making a real world simulation almost everything has to be approximated and your imagination fills in the gaps.

To make the game more real we wanted to give everyone their own personality; all the people have their own names, characters, and professions. We want players to build up relationships with the characters, so if there is someone you particularly like in the game you can follow his life.

PowerMonger is essentially a war game. But unlike the traditional board or computer games of that genre, we've created something that exists in real time, where you can do almost anything you want. Real time action is an important feature in all our games. We think that if the game ever stops in the middle of play, the magic is broken and any relationship built up between you and the game is destroyed. In PowerMonger, the game stops for nothing.

Another problem in designing a "deep" game is keeping the operation as simple as possible. In PowerMonger, initiating an action is not complicated, but the result or consequences of that action may be. For example, if you click on the Attack icon and then attack a sheep being herded by a shepherd, that won't necessarily be the only result. The shepherd, wanting to protect his sheep, may attack you. The game may react to your simple instructions in a complex way.

Another feature that is very important to us in all our games, is a multi-player function. We feel that playing a computer game with someone else will give you maximum enjoyment.

Bullfrog has an idea of the ideal game they want to write. Populous was the first step to writing this game, and PowerMonger is further along that road. But our ideal game is yet to be written.

CONTENTS

Getting Started	2
The Situation	3
The Path To Conquest	4
Copy Protection	5
The World	6
The Overview Map	7
<i>Overview Map Controls</i>	7
Contour, Objects, Settlements, and Food	8
Captains	8
Settlements	8
Close-Up Map	9
Close-Up Map Controls	9
Changing the View	9
The Rotation Arrows	10
The Zoom Buttons	10
The Conquest Balance	10
Seasons and Weather	10
Sound	11
Symbols	12
Option, Posture, Command, & Query	12
The Option Symbol	12
<i>Game Speed</i>	12
<i>Game Box Options</i>	13
<i>File Box Options</i>	13
Posture Symbols	14
Command Symbols	15
<i>Military Symbols</i>	17
<i>Movement Symbols</i>	19
<i>Food Symbols</i>	20
<i>Invent Symbols</i>	21
<i>Miscellaneous Symbols</i>	22
Query Symbol	23
The Captains	25
<i>Strength</i>	26
<i>More About Posture</i>	26
<i>Inventions</i>	26
Equip Invention	29
Two Player Game	30
Symbol Summary	36
Questions & Answers	40

Getting Started

Loading The Game

Follow the instructions in your Command Summary Card to load PowerMonger. After you have loaded the game, the introductory sequence will appear. You can either watch the sequence or click the left mouse button to go to the Name Screen.

Name Screen



After the opening sequence, a screen will appear asking “What Is Thy Name, O Lord?” Type in the name you want to use in the game, either your own or one you make up, and then

press Return to begin the game. If you don’t want to use a name, press Return when this screen appears.

Option Screen



Next, the Option Screen will appear. This lists the options you have at the beginning of the game. Click on the option of your choice:

Start New Conquest: Start the conquest from the beginning. This will be the *Standard* game with a 195 pre-set territories to conquer.

Continue Conquest: When you are starting the game the first time, a Load Save Game requester will prompt you.

Play Random Land: Enter a random computer-generated territory. Using this option lets you go from territory to territory without the linear development found in the Standard game.

Load Data Disk: Load a new Data Disk. Data disks will be released at a future date. They will complement and add to the original PowerMonger world. This option will *not* work with the original PowerMonger disk or copies of it.

The Situation

Your rule was fair and just. Your fate may not be...

Your kingdom of Miremer was destroyed by a devastating seismic upheaval. Collapsing mountains and fiery, poisonous ash spared few of your subjects and none of your lands. You have plied ambivalent seas for countless weeks seeking a new home for your remaining handful of followers (and a new realm for yourself). Finally, the fickle waves grew weary of toying with you and cast your frail craft onto the unfamiliar shores of a foreign land. This land is rich and fertile, as you have dreamed it would be; but like all bountiful places, it is populated. Petty warlords and captains reign over the larger settlements and send their armies sweeping across the countryside. You could debase yourself into vassalage to these backward *nobles* and submit your followers to their misrule. But you were a king not so long ago, and you have borne enough indignity. It is they who will pay homage to you. You will gain a crown once again...or die in the attempt.

As you venture across this new domain, you will have to win the fealty of those you encounter by words of diplomacy or dint of arms. The native tribes are laggards in the art of war, but are far from helpless. You are also not the only strangers here. Other invading tribes under ruddy or azure banners mourn lost kingdoms, and yearn after new ones. Like the natives, they must be persuaded to join your cause or be put to the sword. There is no other path to kingship.

As you campaign, you will reap the fields' fair bounty and probe the deep places of the world for hidden wealth. The powers of life and death, enrichment and impoverishment, plenty and starvation, can be yours in absolute measure. But you must manage your power, like any other resource, wisely. Constant warfare will deprive you of present followers and future recruits, and continual pillaging will fill your stores for the moment, but will leave the land empty of anything to fill them in the future. You must learn to balance force with restraint, and the requirements of the day with the needs of days to come. Only then shall you be the ultimate...



The Path to Conquest

There are 195 territories to conquer in the world of PowerMonger in the Conquest mode. After the game loads, the Map Selection Chart will appear displaying the various territories you can conquer. At the beginning of the game, the *only* territory you can conquer is the island in the top left corner; if you cannot immediately find this island, move the On-Screen Pointer around in that corner of the Chart. The red Selection Rectangle will appear when the pointer is over it. Click on this territory with the left mouse button to invade it, and then enter the correct copy protection number when prompted to begin playing the game.

To survive and prosper in a territory you will need to conquer settlements, get food and men, and invent both weapons and trading items. But keep in mind there are enemy armies prowling about who are after the same resources and doing the same things you are. These armies are as strong as yours, and some of their commanders are at least as aggressive and clever as you. You have conquered a territory when you bring a significant portion of the population under your control. When all the gold in the Conquest Balance is on the right side you have conquered the current territory. (You don't always have to bring all the population of a territory under your control to conquer that territory). When you have conquered a territory, click on the Option Symbol, then on the Game box and then on the Retire box (explained under Option Symbol in the Symbols section of this manual). The computer will then tell you that you have won. Click with the left mouse button to go back to the Option Screen.

After you have conquered the first territory, you can move on to any adjacent territory. To enter a territory, place the On-Screen Pointer over its map; when the red Selection Rectangle appears around the territory, click with the left mouse button. (Note that you can only move into territories which are highlighted in red when the On-Screen Pointer is over them.) In the case of this first territory, you can move to territories to the right and below; in more centrally placed territories away from the corners, there will of course be more directions in which you can move and more territories to choose from. To help you keep track of where you've been, a dagger will appear in the map of each territory after you conquer and leave it, and a yellow Selection Rectangle will appear around them when the On-Screen Pointer is over them.

When you move to a new territory, you will effectively be starting all over again. The Captains you recruited will stay behind to administer your conquest. You may not have as many men or as much food as you had before; building up vast armies and enormous hoards of food may help you in the territory you were in, but not in the one you're going to. You can't take your spoils with you.

To scroll the Map Selection Chart downward, place the On-Screen Pointer on the golden border at the edge of the chart, and press and hold down the left mouse button. Then, with the button held down, move the mouse upwards and the Map Selection Chart will scroll up along with it. And if you hold down the mouse button and move the mouse downward, the map will scroll down as well.

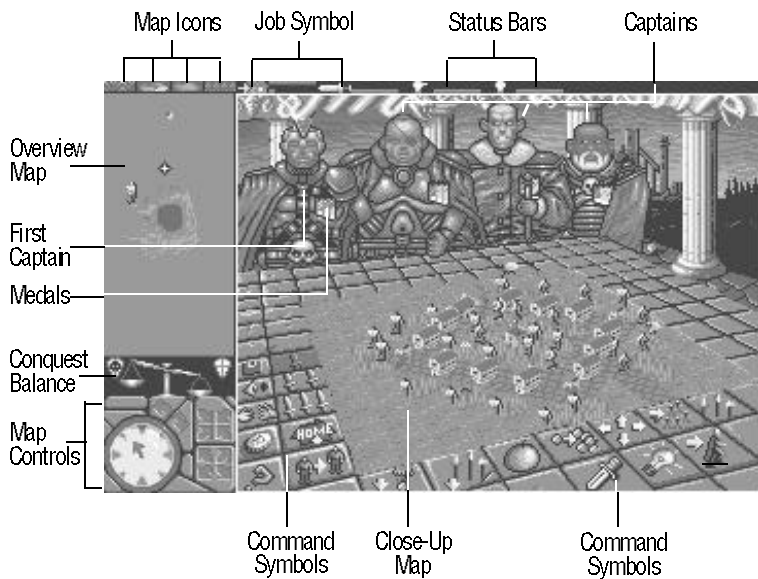
As you get farther from the first map, the going will get tougher and tougher; the armies you face will get more aggressive and better equipped, and resources will become increasingly difficult to find and secure, let alone manage. (You can move back to easier territories you haven't conquered yet if the going gets too tough.) The most formidable territory of all, and the one you must finally conquer to rule the world, is in the lower right corner of the Map Selection Chart.

Copy Protection

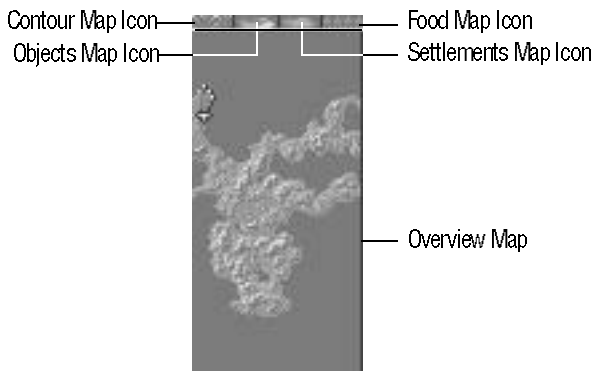
After you have chosen a territory to enter, a copy protection map will appear and your computer will ask you a question about it. The map appears in your manual between the pages specified on the screen, along with the numerical answer to the question. Answer the question by clicking on the triangles above and below the numbers on the screen; clicking on the triangles above the numbers will increase them, and clicking on the triangles below will decrease them. (Make VERY sure you find the right map and enter the correct number; refer to your Command Summary Card if you need help). Click on one of the OK boxes after you have entered the correct number.



THE WORLD



The Overview Map



The Overview Map shows the territory you are currently attempting to conquer. On this map you can see roads, bodies of water, forests, settlements, and their occupants.

Overview Map Controls

The White Cross on the Overview Map indicates the center of the area currently shown in the Close-Up Map. By changing the position of the cross on the Overview Map, you change the view in the Close-Up Map. You can move the White Cross in two ways:

- **Click on the Compass:** Use either mouse button to click on the Compass to indicate in which direction you want the White Cross to scroll. If you click with the left mouse button, the cross will move a short distance with each click; if you press and hold down the right mouse button, the cross will continue to scroll until you release the button. The Compass can move the White Cross in eight different directions: North, south, east, and west, as well as north-east, north-west, south-east, and south-west. Note that the compass itself always points north; this is important to remember if you have rotated the map.
- **Click on the Overview Map:** Click on the Overview Map with either mouse button to move the White Cross to whatever location you want to view.

Contour, Objects, Settlements, and Food

Directly above the Overview Map are four map icons. Clicking on each of these icons will show you different map information on the Overview Map:

Contour Mode Map	Hills, valleys, and plains. Dark green indicates the lowest-lying areas, while higher elevations are colored lighter green, then yellow, then brown, and, at the highest elevations of all, white.
Objects Mode Map	Trees, houses, workshops, men, and roads. Trees appear as red dots, roads appear as gray lines, houses appear as light brown dots, your men as white dots, and workshops appear as yellow dots in settlements.
Settlements Mode Map	Settlements and roads shown in gray, and your men as white dots.
Food Mode Map	Same as the Settlements Mode Map, with settlements color-coded according to how much food is in each. Black settlements indicate no food and white settlements indicate comestibles in massive abundance. Dots in varying shades of gray indicate food supplies somewhere in between the two extremes; the lighter the shade of gray, the more food is present. Click on the Food Map Icon again to update this map.

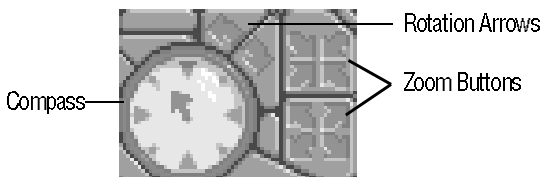
Captains

The currently selected Captain will be visible on the Overview Map as a man in a red cloak. But if he is spying, he will wear a shirt of the same color as the army on which he is spying.

Settlements

Settlements are important sources of men, food, and inventions. When you conquer one, you may want to strip it of all of the above. But if you take all the men, there will be no one to gather food or create inventions; settlements repopulate (the stork brings them), but they do so slowly. And if you take all

the food, the men will stop whatever they were doing and put all their efforts into agriculture.



Close-Up Map

Close-Up Map Controls

The Close-Up Map shows you details of the area where the White Cross is positioned on the Overview Map.

Changing the View

There are several ways to change the Close-Up Map to view a different area:

- **Click on the Overview Map:** Click on the area on the Overview map that you want to view on the Close-Up map with either mouse button. Or press and hold down either mouse button on the Overview Map, and move the On-Screen Pointer around the map. The White Cross, and thus the Close-Up Map view, will follow the pointer.
- **Click on the Compass:** Use either mouse button to click on the Compass to indicate in which direction you want the Close-Up Map to scroll. If you click with the left mouse button, the map will scroll a short distance with each click; if you press and hold down the right mouse button, the map will continue to scroll until you release the button. The Compass can scroll in eight different directions: The cardinal directions of north, south, east, and west, as well as northeast, northwest, southeast, and southwest. Note that the compass itself always points north; this is important to remember if you have rotated the map.
- **Click on any Captain:** Click on the large figure of any Captain with the *right* mouse button. (Careful not to click on his medals, nor click with the *left*.) The Close-Up Map will immediately jump to that Captain's current location.

The Rotation Arrows

The Rotation Arrows rotate the Close-Up Map left or right so you can improve or just change your view. Clicking on a Rotation Arrow with the left mouse button rotates the map to the next cardinal direction (north, south, east, or west) in the direction of the arrow, for a total of 4 different view positions. Clicking on a Rotation Arrow with the right mouse button rotates the map by much smaller increments, for a total of 64 view positions. Also, if you press and hold down the right mouse button on a Rotation Arrow, the map will continue to rotate until you release the mouse button.

The Zoom Buttons

You can zoom the Close-Up Map view in or out by using the Zoom Buttons. Clicking on a Zoom Button with the left mouse button zooms in or out by one step. Clicking a Zoom Button with the right mouse button zooms in or out to the maximum near and far settings. Note that as you zoom in closer and closer on the Overview Map, mobile figures (people, animals, etc.) seem to move faster and faster. They aren't, really; this is an illusion created by the fact that smaller and smaller areas are being viewed as you Zoom in.

The Conquest Balance

A territory has been conquered when a substantial portion of its population is under your control. The Conquest Balance indicates when this has happened. When you start conquering a territory, the scales will be tipped toward the left. As you gain control of more and more people, your half of the balance on the right will fill with gold. When the balance is tipped in favor of the white-and-blue shield on the right, and all the gold is on your side, you've won that territory. Click on the Retire box in the Option Symbol (explained in the Symbols section of this manual) to move on to the next territory.

Seasons and Weather

Seasons pass in the world of PowerMonger as they do in any world. In spring, summer, and especially in the autumn, food will be plentiful; in winter, it will be scarce, as no more will be produced in the settlements. You will notice two weather effects, rain and snow, as the seasons run their cycle.

These forms of precipitation will, of course, slow an army as it moves across the land.

There is little even the First Captain can do to change the weather, but there is one way his followers and the followers of his subordinate captains can change weather patterns. When townspeople or armies are ordered to Invent (see Invent section), they will often use wood to fashion their handicrafts if there is a forest near. But they can go too far, which leads to deforestation, which in turn can disturb weather patterns. Forests will grow back, but until they do, rain and snowfall will both be above normal.

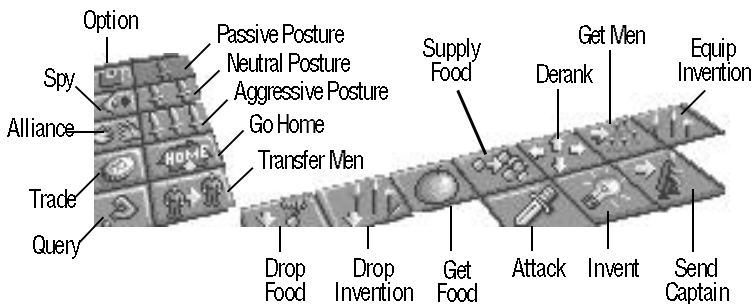
Sound

As you move about the world of PowerMonger, you will hear a lot of background noise: Sheep baaing, birds singing or taking flight, work sounds from neighboring villages, men cheering, etc. These noises can provide important clues and can tell you what's going on nearby on the Close-Up Map. When you hear a sheep, it means one or more of them are close by, and they can be a plentiful source of food. Sounds of battle means combat is going on nearby. Birds taking flight means someone has disturbed them; that might mean there is an enemy in the forest. Hammering and sawing from a nearby settlement or wood means someone is inventing something; if this is going on in an enemy settlement, you might want to go in and put a stop to it, or at least start inventing something of your own to counter them. Birds singing means spring has returned, and wind blowing means winter is here. And when your men start cheering during a battle, it means they've won.

The First Captain and his subordinate Captains also express their level of enthusiasm concerning orders. If they like the order you give them, they will say an excited "Yeah!" If they don't like it, their "yeah" will be much more muted, or they might not say anything at all. This could be a clue that your order might not be such a good idea.

In the background, you will always hear the breathing of whichever Captain you have selected. If he is breathing evenly, everything is going well. If his breathing becomes labored and ragged during a battle, it means that things aren't going well, and he may even be dying.

SYMBOLS



Option, Posture, Command, & Query

To activate a symbol, click on it with left mouse button.

The Option Symbol

Use this multi-purpose symbol to set the game speed, initiate two player mode, save & load games to floppy disk, change maps, or retire from the game. (Two Player mode is described in a separate section near the end of this manual. Refer to your Command Summary Card for instructions on Saving and Loading games.)

Game Speed



To set the game speed, click on the game speed track.

The closer you click to the +, the faster the game speed will be; the closer you click to the -, the slower it will be. (If you have a computer with an advanced processor, you might want to slow the game down).

Game Box Options



Click on the Game Box to access these options, then click on the appropriate box to activate its option:

Retire	Retire from the territory you're in. If you are ahead (see the Conquest Balance under the Overview Map) you win; if you are behind, you lose.
Replay Map	Restart conquering the current map from the beginning.
Select Map	Leave the current territory and go back to the Map Selection Chart to choose another territory to conquer.
Multi Play	Begin two-player game. See separate section on page 30.
Random Map	Call up a computer generated random map to conquer.
Pause	Pause the game; click on Pause again to unpause the game. Note: The Close-Up Map vanishes when the game is Paused.
Send Message	Send a message in two player mode. (See Two Player Game section.)

File Box Options

These options Save and Load PowerMonger games. See your Command Summary Card for instructions.

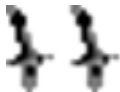
Posture Symbols

Posture determines the relative aggressiveness of a Captain, from the First Captain (you) down through all the Captains you recruit during your campaign of conquest. These icons only modify the innate aggression of any Captain; the First Captain is always the most aggressive, and the last Captain farthest to the right is always the least aggressive. A Captain's Posture effects not only his own behavior, but the behavior of his troops and of others nearby as well. The more aggressive a Captain is, the more food and men he will take from a village he has captured, and the more people his troops will kill in the course of battle. A Captain's aggressiveness will also affect what the people of a conquered village will invent (see Invent), and what sort of Trading deals can be made. Note that the First Captain set on Aggressive posture will take all the food and men and do his best to kill everyone when attacking a village.

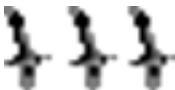
To set a Captain's posture, click on the Captain (making sure the Selection Arrow is over his head), and then click on one of the three Posture Symbols:



Passive Posture



Normal Posture



Aggressive Posture

Note that one posture symbol will always be highlighted.

Command Symbols

The Command Symbols represent the different orders you can issue to yourself as First Captain, the other captains who have joined you, and indirectly the people who follow them.

To issue a command:

1. Click on the First Captain or a subordinate Captain with the left mouse button. (Click on the large figure of him standing at the table, not on the smaller images of him that appear on either the Overview or Close-Up Maps.) The bobbing arrow should appear over his head and his expression will change, meaning he is ready to give or receive a command. If the arrow doesn't appear, try clicking on the Captain again. Be *careful!* Do not click on his medals.
2. Click on the Command Symbol that corresponds to the order you want to give. (A Command Symbol will be highlighted green when it is active; if a symbol does not highlight, try to click on it again). Any incomplete command can be cancelled by clicking on its symbol again, which will unhighlight it; make sure the highlighting goes out or the command will still be active. Most Command Symbols become unhighlighted as soon as the command it represents is given. Any command can be cancelled before it has been given by clicking on its Command Symbol a second time. Make sure the highlighting goes out or the command will still be active.

The Go Home, Drop Food, and Drop Invention Commands are exceptions to this procedure. Those Commands are executed in one step (see the individual Commands below, for more information).

3. Most Commands use a Direction Line when you issue them on the Overview Map. A Direction Line is a line that extends from the selected Captain to the On-Screen Pointer on the Overview Map. Use the On-Screen Pointer to point at the location you want to be the target of the command. To view an area before you decide to give a command, click with the *right* mouse button.

4. The location or object selected as the target of an order must be appropriate for that order. For example, an Attack command must have a settlement, a person, livestock, etc., as its target or it cannot be given. If the Direction Line is pointed at an inappropriate location or object, it will be black, you will hear a slow drumbeat, and no command can be issued. If it is pointed at an appropriate location, the Direction Line will be red, and the drumbeat will be more rapid. Click with the *left* mouse button to give the command.
5. Orders can also be issued on the Close-Up Map. You can choose targets more precisely this way; that is, you can choose a single person as the target for an Attack order on the Close-Up Map vs. choosing a whole settlement on the Overview Map. When an appropriate target is visible on the Close-Up Map, click on a Command Symbol and then on the target. The Direction Line will appear red on the Overview Map when the On-Screen Pointer is over an appropriate target and the order will be issued.
6. Bodies of water can prevent an order from being carried out; for example, if the target is on an island, and the selected Captain is on the mainland and does not have access to boats, an order to Get Food on the island cannot be carried out by that Captain, and he will just pace up and down once he has reached the interposing body of water.
7. If you have successfully given an order to the First Captain, it will begin to be carried out immediately. A Job Icon will appear beside the Status Bars above his head and he will respond "Yeah". If an order is given to a subordinate Captain, the First Captain must dispatch it to him by carrier pigeon so it may take a while for him to react, depending on how far away he is from the First Captain. A little white pigeon fluttering beside the Status Bars above the targeted subordinate Captain's head means the order is still on its way. When a Job Icon appears over the subordinate Captain's head and he says "Yeah", the order has been successfully given. Note that in every territory you will have a limited number of carrier pigeons to carry your orders, and you can get no more in that territory. So be careful of what orders you give and what your posture is when you give them. You need to make every order count.

8. Some commands do not operate in keeping with these general instructions. You'll find specific instructions about how they work under the Command Symbol descriptions given below.

Military Symbols

Attack



the person, place, or thing at the end of the Direction Line. Possible targets include settlements, farms, towers, individual men, sheep, and trees; click with the *left* mouse button to attack a selected target. If you attack a sheep and kill it, it automatically becomes part of your food stock. If you attack a tree and chop it down, you can prevent enemies from using it to make their own inventions. If you attack a settlement or army and win, the people left alive will become your followers, and you will have access to all their resources; watch for souls going up to heaven during such combats, because it means that casualties are occurring. Keep in mind that if your target is ambulatory, it may very well have trudged, marched, or scampered away by the time you get to where it was when you targeted it. You will then track it down, but it might be faster than you. Note also that your active Captain is free to move around during a combat (see Send Captain below).

If you click with the *right* mouse button after a target has been chosen using the Attack Symbol, and the rank is on its way to the chosen target, the Captain will scan the immediate area for men from that target. If he detects any, he will change direction and attack them. This could be used to take out people from the target area who are out inventing, or a lone wanderer.

You lose a combat when your Captain dies. If a subordinate Captain dies, he disappears from the screen, and he drops his stock and equipped items, which will be visible on the screen. Another Captain can be recruited to take his place later. (Men killed in combat also drop their equipped items, which will be visible). But if the First Captain dies, the game is over and a *You Have Been Defeated* screen will appear. Click the left mouse button to return to the Game Option Screen.

Get Men



from one of your settlements. The number of men taken is determined by the aggression rating of the active Captain; a Passive Captain will attract only a few men to his banner, a Neutral Captain will be able to recruit a few more, and an Aggressive Captain will impress almost every available able-bodied man.

Transfer Men



reassigns men from one Captain to another. The number of men transferred will depend on the Posture of the Captain being transferred *from*: Passive posture will transfer 25%, Neutral posture will transfer 50%, and Aggressive posture will transfer 100%. Click with the *left* mouse button on the transferring from Captain, click on the icon, and then click on the Captain *to* whom the men are being transferred.

Spy



sends any Captain to gather intelligence. To enter into this intrigue, select the Captain to whom you want to assign the task by clicking on him with the *left* mouse button, then click on the Spy symbol. Now click on the neutral or enemy settlement you want him to spy on. He will go there, and if he is accepted into the community, the location of the settlement's population will show up on the Overview Map as dots of the appropriate color (red or blue for enemies, yellow for neutral). If he is recruited into an enemy army, then dots of the appropriate color will appear on the Overview Map showing the locations of the soldiers in that army.

Movement Symbols

Send Captain



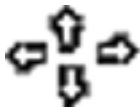
anywhere you choose. Select the Captain you want to send, and then select a destination on the Overview Map using the Directional Line and click with the *left* mouse button, or click on the location on the Close-Up Map. Note that you can use Send Captain to get a Captain out of harm's way during combat without breaking off the battle by clicking on the Send Captain symbol and clicking on a destination a short distance away on either map; however, the Captain might get dragged right back into the battle. Note that an individual cannot get out of a battle while engaged in hand-to-hand combat. If you click on a location far away on the Overview Map, and the Captain is not dragged back into the battle, his men will follow him and the battle will be broken off.

Go Home



sends the Captain and his army back to the Captain's home. This command is a handy way of getting out of a losing battle while keeping an army intact.

Derank



is similar to Go Home but will send a fraction of an army home while the Captain involved will stay with the portion of his forces that remain in the field. If the Captain's Posture is Passive, 25% of his troops will leave; if it is Neutral, 50% will find their enlistment is up; and if it is Aggressive, 100% will re-enter civilian life. People with the worst weapons or no weapons, or no boats, will go first, leaving the most useful soldiers to remain in the army.

Food Symbols

Get Food



from a friendly settlement or cache (see Drop Food symbol below). The amount of available food a captain gets is determined by his Posture; if his posture is Passive he will get only a little food, if it is Neutral he will get more food, and if it is Aggressive he may take all the food there is present. So, the more gruff he grows, the more grub he grabs.

Drop Food



will cause the active Captain to drop a portion of his supply of food. The amount he drops depends on his Posture: 25% if his Posture is Passive, 50% if it is Neutral, and 100% if it is Aggressive. The Captain drops this food wherever he is standing and does not have to use the Directional Line. This food will appear on the Close Up Map as a small sack of grain. Animals, enemy armies, and passers by will not take this food since it is hidden from everyone except you and your followers. But if food is dropped in a settlement, it will be added to that settlement's food supply. Note: Don't drop your food into the sea! It will be unrecoverable, and would taste horrible in any case.

Supply Food



to anywhere that is an object. The selected Captain looks for a nearby settlement that is friendly. He will then go there, drop food (the amount he drops is determined by his Posture, just as described in the Get Food command above), go to the nearest friendly location that has food, and get more food (again, the amount he gets depends on his Posture), and return to the place to be supplied to drop more food. This process will be repeated until he gets different orders.

Invent Symbols

Invent



something new and wonderful in a workshop. Workshops are found only in settlements, but they are nevertheless easily spotted on the Overview Map in Object Mode as yellow dots, and on the Close-Up Map as structures with red signs. What can be invented in a particular village depends on what raw materials are available, the occupation of certain locals, and the Posture of the Captain involved. See separate Invent section for more details.

Equip Invention



equips either inventions you have ordered to be made or objects carelessly left behind by their previous owners. To equip an Invention you have ordered to be made, click the Equip Invention symbol and then on the settlement where the invention was created; to equip found objects, click on the object itself. Found objects and inventions are identical, i.e., boats, swords, bows, etc. The Captain's posture determines how much is picked up: 25% if Passive, 50% if Neutral, and 100% if Aggressive. Note that picking up too much will slow down a Captain.

Drop Invention



drops any surplus stock. The Captain's Posture determines how much gets dropped: 25% if Passive, 50% if Neutral, and 100% if Aggressive. Surplus stock is shown as what the Captain is carrying when you click on his Medals, and is defined as unequipped weapons or pots, but never equipped weapons or boats. These may later be picked up by the Captain who dropped them, or by another Captain using the Equip Invention command (as long as you don't drop them in the sea, since they're gone forever if you do). They will not be picked up by passers by or enemy armies. If you drop them in a settlement they will be added to that settlement's stock.

Miscellaneous Symbols

Trade



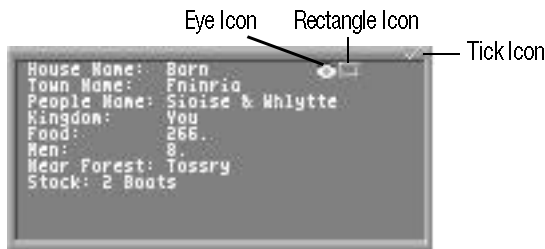
goods (weapons, pots, etc.) with a settlement in return for food, items or stock. Every item has a set *food* value that will be modified if your Captain is good at bartering, and bartering skill is in turn determined by innate aggression. The trading settlement will trade you items for food. The Captain's posture determines what he will trade for and which items he will want first. An Aggressive Captain will trade for a cannon before a Passive Captain will, while a Neutral Captain will fall somewhere in the middle; a Passive Captain will trade for a plow (for example) before he will trade for a cannon, while a Neutral Captain will prefer a boat to a cannon. Note that the weapons your army is using or carrying will not be traded.

Make Alliance



with another tribe. This requires the payment of tribute from your excess stock (similar to Trade above). Once an alliance has been made, you will have access to that tribe's settlements and resources, and they will likewise have access to yours. An alliance will be broken by a violent act taken against that ally. And if an offer of alliance is rejected, you lose the tribute you offered, and you may become the object of an attack.

Query Symbol



Query



brings up information about any object, living or non-living, on the Close-Up Map by clicking on it with the left mouse button. This can bring up from 1 to 4 information windows at a time. When you click on an object, you will get information about *every* object in that square; for example, clicking on a house with two people in it will bring up three windows. All these windows will be *stacked*, one on top of the other. To separate them and make them readable, just place the on-screen pointer over the top bar of any Query window, hold down the left mouse button, and drag the window to any part of the screen. Repeat this process with every Query window until they're all separated. Click on the Query Symbol with the *right* mouse button to clear *all* Query Windows from the screen.

There are three small icons that appear in Query Windows; some windows include all three, while others contain only one or two, but the icons always work the same way in every window. Click with the left mouse button on the Tick Mark Icon (✓) in the upper right hand corner of all Query Windows to cancel the window. Click with the left mouse button on the Rectangle Icon to update information in the Query Window; this is a valuable icon to click on frequently if you have a Query Window up during a battle. And click with the left mouse button on the Eye Icon to center the Close-Up Map on the subject of the Query Window.

Different objects reveal different ranges of information when they are the subject of a Query command:

Buildings/Settlements	Building type; settlement name; names of the building's two occupants (there are never more than two, husband and wife); to which ruler the settlement belongs, Harold II, Jayne III, or Jos XVIII; the nearest forest; how much food there is in the <i>entire</i> settlement; how many men there are in the settlement and what stock (if any) the settlement has.
People	Their name, the settlement where they live, their health, the building where they live, their spouse's name, how hard they work, their profession, what item they have equipped, who they follow, and their age.
Sheep	Those woolly things that bleat incessantly. Mighty good eating.
Trees	What forest it is in, what kind of tree it is, whether there are any birds in its branches, and the season.
Birds	Whether they're carrier pigeons and to whom they're going. (Watch out for birds carrying little bundles of joy.)

The Query Symbol will remain highlighted and active until you cancel it or until you click on another symbol.



THE CAPTAINS

The First Captain will encounter other Captains along the way; he can recruit them by conquering the settlements they rule. As they are recruited, they will appear by the First Captain's side, and they are his to command. When a Captain dies, he will disappear from the screen.

Status Bars

Three bars appear above the head of every Captain under your command, displaying his current food supply, men, and strength. The top blue line indicates food, the middle red line signifies men, and the bottom green line stands for strength. Keep an eye on the green strength line; when it is gone, so's the Captain. And when the First Captain's strength line comes to an end, so does the game.

The Selection Arrow

This arrow bobs up and down over the head of the currently selected Captain. Click on a Captain to select him; he will be the Captain who will receive the orders you give.

The Medals

Click on the medals hanging on a Captain's chest to display an information box about him even if he is not the currently selected Captain. Clicking on medals will tell you the Captain's name, current job, aggression level, loyalty level, Strength, Speed, the amount of food he has, how many men he has, and how much stock (if any) he is carrying. This information box functions just like a Query Box (see Query Symbol).

Strength

Strength is the indication of how healthy people in the world of PowerMonger are. For Captains, strength is displayed in two ways. First, as the green line in the Status Bars. And second, in the following terms, from strongest to weakest, when you click on a Captain's medals: Fit, Well, Weak, Very Weak, Sickly, Very Sickly, Dead.

A Captain's normal Strength level is Fit. Being wounded in combat is the only thing that will reduce his Strength. If he is reduced below Fit, he will eventually heal back in camp. If his Strength is reduced to Dead, his stay on this planet is over (unless you Replay The Map or Start New Conquest).

More About Posture

A Captain's innate aggression is indicated by his position at the table. The Captains to the left are more aggressive than the Captains on the right, but any Captain's posture can be modified by using the Posture icons.

A Captain's actions, or even the actions of his troops, are not always predictable when his posture is set at the aggressive or passive extremes. If a Captain is camped near a battle, even a battle that does not immediately concern him, he may join in the fray if he is in an aggressive frame of mind, or he may run away if he is feeling passive. An aggressive Captain might kill someone who does no more than cross his path when that Captain is moving from place to place. Obviously, any of these actions can be avoided by changing the Captain's posture. But you might be too late unless you are paying close and careful attention.

Inventions

You won't find everything you need just lying around on the ground or in the settlements you conquer. Sometimes it pays to use your head instead of your sword to get what you need. This is where inventions come in.

The Invent command tells a Captain to have his men or the citizens of a friendly settlement invent something. You can only invent in a village with a workshop; as mentioned previously, these show up as yellow dots in settlements in the Overview Map when it is in Object Mode. What the settlement produces depends on four factors: The Posture of the Captain carrying out the order, the available resources, the presence of a merchant and the occupations of certain locals.

An aggressive posture generally produces heavy weapons like cannons or pikes. Passive posture produces items like plows. Inventing any of these, of course, is dependent on having the correct raw materials at hand as well as the appropriate posture.

The results of the inventive urge are also dependent on the location. For example, inventing near a forest on low land near water will usually produce boats. Inventing in a town that is on high ground away from any forest usually produces swords or cannons.

Necessary resources include wood and steel. Forests are a good place to find wood; that's why they call them forests. But keep an eye on people if they take up lumbering; they can strip a forest clean, and forests take a long time to grow back. So don't leave the Invent command active without keeping track of what people are doing off in the woods. Wood can be used to make pikes, bows, ploughs, catapults, and, if you're near water, boats.

Steel is harder to come by. You have to construct a mine to extract the raw ore to forge into steel, and the mine will usually have to be situated at a high altitude. Mine construction is a time-consuming process, and any settlement that has a mine will be an inviting target; they're easy to spot since they're all marked by a tower. If you are not near any useful raw materials when you try to Invent, you'll produce pots from the local mud. Pots are valuable mainly for trade. They won't help you during battles, of course, but at least you'll have a handsome and sturdy receptacle to bleed into after you've had the stuff beaten out of you.

Note: When people in a settlement are inventing, they can't get food or other supplies. And if they run out of food, they'll gradually stop inventing and take up producing food; i.e., they can still invent if enough people are producing food.

The table below lists what posture is needed to invent particular items plus other conditions that might be necessary:

<i>Item</i>	<i>Posture</i>
Catapult	Aggressive posture & merchant in settlement
Cannon	Aggressive posture & merchant in settlement
Sword	Near a mine & no merchant in settlement
Pikes	Neutral posture
Bows	Aggressive posture
Boats	Passive posture & fisherman present
Plows	Passive posture
Pots	Can be made any time

Equip Invention

Once you've invented something, you probably want to pick it up and use it. Or, you might want a loyal Captain and his men to pick up the item. In either case, use the Equip Invention symbol and modify the Captain's posture appropriately to pick up your invention by clicking on the building in the settlement where the invention was made.

You can also equip inventions you find. Often after a battle, weapons will be left on the battlefield. You can equip these the same way you equip things made in workshops, by clicking on the Equip Invention symbol and then on the weapons. You can also equip boats you find or that belong to your settlements. But since settlements on bodies of water or rivers depend on fishing for part of their food, if you take away their boats their production of food will go down.

If the invention you equip is a hand weapon, empty-handed troops are equipped first. The Captain is equipped first of all, next the First Captain's original followers, and finally the other troops.

If troops have more than one kind of hand weapon to select from when they equip, they will choose weapons in the following order: Bow first, then sword, then pike. In camp, holders of different weapons will sit in different concentric circles around the Captain and the campfire.

Anything other than equipped weapons or boats is considered to be carried as stock by the Captain and to be used as trade or for making alliances. The more stock a Captain has, the slower he will travel, so be careful not to overload him. (The only excess items that won't weigh him down are pots.)

TWO PLAYER GAME



There are two ways to play against a human opponent: using a modem to connect to a remote player, or by using a null modem cable to connect the serial ports of two computers (this is *datalink mode*).

To play in two player mode, both players will need original copies of PowerMonger.

Connecting in Datalink Mode

1. Get a null modem cable. You can probably find one from your local computer store.
2. Make sure power to both machines is off.
3. Connect the cable between the serial ports of the two computers.
4. Turn both machines on.
5. Boot the game on both machines and start the game anyway you like (i.e. Start New Conquest, Continue Conquest, Play Random Land or Load Data Disk). If you want to choose Load Data Disk, first ensure that both players have a copy of the same Data Disk.
6. Once the game screen appears, click on the Game Setup icon then click on the GAME button and then click on the MULTI PLAY button to bring up the Multiplayer Login window.
7. Next choose who is going to play which color tribe. See Starting the Two Player Game, below.
8. Choose a baud rate by clicking in the box next to one of the 6 choices; 300, 1200, 2400, 4800, 9600 or 19200. The box you clicked in will light up green. The baud rate must be the same for each computer.
9. Now go to Starting the Two Player Game.

Connecting Modems in Voice Mode

If you and your opponent can plug phones into your modem, then you can connect in voice mode.

1. Disconnect both machines from their power supply.
2. Connect the modem's serial cable to the computer. Then connect the modem to the phone line; your phone should be connected to the modem.
3. Reconnect the power supply to both machines.
4. Call your friend on the phone and boot the game on both machines. Both players now start the game anyway they like (i.e. Start New Conquest, Continue Conquest, Play Random Land, or Load Data Disk). If you want to choose Load Data Disk, first ensure that both players have a copy of the same Data Disk.
5. Once the game screen appears, click on the Option Symbol then click on the Game button and then click on the Multi Play button to bring up the Multiplayer Login window.
6. Next choose who is going to play which color tribe. See Starting the Two Player Game below.
7. Choose a baud rate by clicking in the box next to one of the 6 choices; 300, 1200, 2400, 4800, 9600 or 19200. The box you clicked in will light up green. The baud rate must be the same for both modems. For identical modems, use the fastest baud rate possible. For two different modems, determine the highest baud rate for both modems; then choose the lower value of the two. The typical baud rates are 300, 1200, and 2400. See your modem manual for details on baud rates.
8. Establish a data connection between the two computers (if you're in normal talk mode on the telephone), by clicking in the Modem Message text input box which you will see above Baud Rate labeled Modem Message.
9. One player should type ATD and press Return. The other player should then type ATA in his Modem Message box and press Return. This will

cause the modem to send a carrier. (The carrier is a high pitched whine that will block out your voices.) Once the CD light on the modem (if it exists) lights up, the connection is established and both players should wait a couple of seconds and put their phones down. Now go to *Starting the Two Player Game*.

Connecting in Non-Voice Modem Mode

If you or your opponent can't plug a phone into the modem, then you will have to type in the dialing or answer command using the Modem Message box. See your modem manual for details on the commands it will accept. Normally, one player would set his modem to auto-answer by clicking on their Modem Message box and typing `ATS0=1` and pressing Return. The other player would then originate the call by clicking on the Modem Message box and typing `ATD[phone number]` or `ATDP[phone number]` for pulse dialing. The modems have connected when the CD light on the modem (if it exists) lights up.

Starting the Two Player Game

First decide who will play which color tribe. Click in one of the boxes beside the four colors (White, Blue, Red, or Yellow) in the *You Are:* section and a green light will appear beside your choice. You can only play one side, so if you change your mind then click on another color choice and the first green light will extinguish and the new one light up. All players will start on the landscape which the player with the highest priority color is using. The priorities are White first, Blue, Red, and finally Yellow.

Using a Saved Game

If you play from a saved game, both players will start from the beginning of the territory that the saved game was being played on and not from the position that the game was saved at. (This is the same effect as loading in a game and then pressing the Replay Map button.) The main use of using a saved game would be to play a specific random world or to give access to later territories in the conquest series. Only the highest priority player needs to load in a saved game. Put the disk containing the saved game you want to use into the boot drive, click on the options symbol and then on the File button. Then select which

saved game you want to load in (A through H) and click on the Load button.

Connecting

To connect, both players should click on the Connect button on both computers. A window titled *Trying For Connect, Looking For Player* will appear and the *Try Number* section of the window will count up showing that the computer is trying to connect. When the machines are connected, the try number will freeze for a second and then a second window reading *Sending Game Info* will replace the first and the *Try Number* section indicates that the data transfer is proceeding correctly. Once the information has been sent, the window will disappear and the game will start. You can abort the connect sequence at any time by clicking on a cancel button.

Disabled Features

Two features are disabled in the two player game once you have connected: Loading a game and Saving a game.

Computer Opponents

If you want more of a challenge then you may wish to turn on computer operated tribes. To do this, bring up the Multi Player window and select one or two Computer opponents by clicking in one or two of the unused (by a human player) boxes beside each of the four colors under the *Computer Is:* section. The computer players cannot play alongside a human player, so if you had chosen to play the white tribe and your friend was playing the Blues then you could only have Red and/or Yellow computer controlled tribes. Also, there has to be a tribe of the desired color on the map for the computer to take control of. If there is not such a tribe, then this command will be ignored.

Changing Sides

You cannot change sides in the middle of a game.

Pausing

Clicking the Pause button will cause both players' games to pause. This can be annoying for your opponent so be considerate!

Communicating with your Opponent

You can send a message to your opponent by clicking on the Option Symbol, then the Game box, then Send Message button at any point during the game. This brings up the *Send a Message* window. Type your message up to a maximum of 120 characters and press Return to close the window. If you find that the keyboard is too unresponsive when typing a message, pause the game first.

You can also talk to your opponent on the phone after a game has begun. Click on the Options Symbol and then click on the Game button and then select the Multi Play button. This will bring up the Multiplayer Login window on both players' machines. Note: we suggest that before doing this you alert the other player by sending a message of *+++ ATH*. Both players should put their modems into command mode at this point by typing *+++* into the Modem Message Box and pressing Return. Pick up the phone at this point and both players should type *ATH* in the Modem Message box and press Return.

This turns off the modem's carrier so if you have a phone connected to your modem you can talk freely with your opponent. (Note: If your opponent hasn't picked up the phone at this point, the phone connection will be lost.)

To re-establish the link after bringing up this window, one player must type *ATD* first and the other must type *ATA* into his Modem Message box. Now both players should press Cancel to continue. Note: If you press Connect, the game will start from the beginning again.

Game Over

After somebody leaves the game in any way (e.g. Retire, Replay Map, Select Map, Random Map, or by winning), you'll see the Game Lost or Game Won picture depending on your standing in the game. At this point, the line will be automatically cut. If your friend got taken out by a computer player, then you may continue the fight on your own. To start another game, both players should restart the two player sequence from the beginning.

Possible Communication Problems

If you're playing in Modem Mode and you get the message *You are both <color>* even after you have tried selecting different color options several times, this means your modem has not established a connection to the remote modem and is merely echoing back to the computer whatever selection you have made. You can stop the echoing by typing ATE0 in the Modem Message box. To fix the problem, you will have to redial your opponent.

During communication, the program checks the data to see if it has been corrupted. If it is corrupted, the computer will resend the data until it gets through. This can cause the game to pause momentarily. If the game pauses for more than 10 seconds for no apparent reason then both players should press Shift ESC to break out and continue their games independently.

If the line is lost, there is a serious communication problem or your opponent quits from the game by cutting his line, the game may freeze. Press Shift ESC to break out of two player mode and allow the players to continue their games independently.

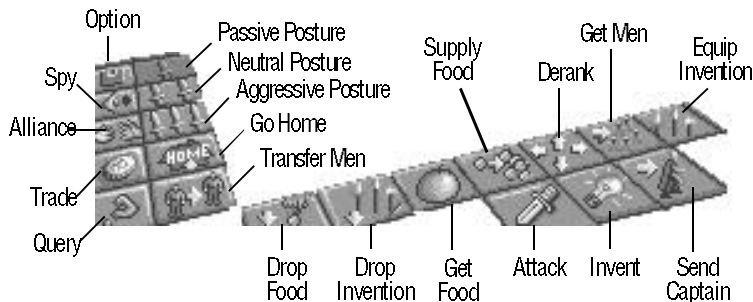
If you have trouble connecting, try lowering the BAUD rate.

Messages in Two Player Mode

“Message From Opponent”: As your opponent types in their message you will see it appear in this window. Once your opponent has finished typing, click on the Tick Icon at the top right of the window to close it.

“Error Try Again”: The computer is unable to establish communications. Click on the Cancel button to try again.

SYMBOL SUMMARY



QUESTIONS & ANSWERS

1. What is the object of this game?

To gain control of the settlements and armies in a territory through diplomacy or conquest. When a significant portion of the population of a territory are under your control, and all the gold in the Conquest Balance is on your side, the territory is yours.

2. What do I do first?

Become familiar with the command symbols and how they function in the game and how the maps work. Pay particular attention to the commands that move your forces around the maps, as well as the commands that manage your resources. You should probably play several practice games to familiarize yourself with the commands and the maps.

3. How can I best prepare myself for a battle?

A. Make sure the size of your army matches or exceeds the number of people in the town you intend to capture.

B. If you have a subordinate captain who has an army, send them into battle before your main army. This will reduce the number of casualties your main army will suffer, divide the enemy forces, and give you a chance to gauge the enemy's aggression level.

C. Do not go in and decimate an entire settlement even if you know they will be an easy victory. You will usually want to leave at least part of the population behind to produce food, inventions, and conscripts for you.

D. Make sure you have a sufficient amount of food and your Captain is in Fit condition. When your food Status bar is shorter than your men status bar, you need to go forage some more eats. Hungry soldiers do not fight well.

E. Equip your First Captain and his army with the best weapons available. This will greatly enhance your chances of winning battles.

F. Taking over the closest settlement is not always the best thing to do.

Survey the other settlements and choose one that will benefit you and your army. Some settlements have better strategic positions than others, and some are richer in resources, i.e. food, population, and weapons.

4. How can I tell if an invention I have equipped or traded for is in my possession?

Check the inventory of the settlement, shop, etc., where the invention was located; then check the Captain who tried to equip the invention (select his medals), or the individual soldiers in the Captain's army. If the invention still appears in the inventory of that location, and does not appear in the Captain's or any of the soldiers' inventories, you have not successfully equipped the invention. Change your posture level and try again.

5. Once the Balance is tipped in my favor in a particular territory, must I retire from that territory, or can I continue PowerMongering there?

You can continue to adventure in any territory after you have conquered it as long as your First Captain is not killed. In fact, doing so is a good way to try out different strategies before moving on to a more difficult territory.

6. I sometimes see an enemy hiding or walking around in my settlements, Once I even saw an enemy carrier pigeon flying into my town square, what gives?

You have a spy, or even worse a traitor in your midst. He or she is probably communicating vital economic and military information to your enemy. Don't take kindly to these people; simple execution is too good for them.

7. I'm having trouble keeping the morale of my army up, and have had a rash of desertions lately. What can I do to improve my command?

As mentioned earlier, keep your soldiers well fed, and battle hardened. Keep a good food supply, or your men will say good-bye, adios, and adieu. War is tough and you will often have to take all the food you find in a friendly or conquered settlement. Remember it's either you or them.

8. My Captain has excess weapons and stock, and I have new recruits fresh out of boot camp that are drooling to get their hands on some weapons.

How do I get my Captain to distribute these items?

The best place to do this is in a settlement.

- a. Make camp in a settlement
- b. Choose the Drop Invention Icon, make sure you have the appropriate posture level set.
- c. Now these items are part of the Settlement's stock
- d. Choose the Equip Invention Icon, again making sure you have your posture set accordingly.
- e. The captain will now redistribute all the stock he picks up to the soldiers that need them, and keep what is in excess for trading purposes.

This procedure can also be performed outside of a settlement, but not as quickly.

9. When I am crossing through a terrain that is near a body of water, or there is a body of water in my direct path, my soldiers sometimes lag behind and get lost. This is not good when I am on my way to glorious battle and my own men show up late. Should I send them back to marching and fitness training?

Unfortunately, not all of your soldiers are as smart as you or your original followers. If you do not want to get caught in battle short-handed, make sure you carefully plan your moves through the terrain. In this game, a straight line is not always the best path to victory, especially if you are the only one equipped with a boat.

10. My army takes quite a while to move from one place to another, can I speed them up?

Click on the Captain's medals and check the Speed. If you are loaded up with a huge weapons cache or trading items, simply use the Drop Invention Icon, update the window, and check the speed again. It should have gone up. Speeds of above 30 are generally o.k. for most territories. You can also speed up the entire game. Refer to the Game Speed section on page 12 of

this manual for that information.

11. Can I take a catapult or cannon on a boat and transport it across the sea?

Yes, any weapon you have equipped can be taken on a boat. You can even fire on enemy settlements from offshore, who says you need a modern navy anyway.

12. Can I divide my army and do complex attack formations?

No, the only way you can send in multiple armies into battle is if you have one or more Subordinate Captains. The soldiers with hand weapons will engage the enemy face to face, while the soldiers with projectile weapons will fight from afar.

13. What are the pros and cons of forming an alliance with another tribe?

The Pros: Forming an alliance will give your army some stability in the form of being able to trade for better weapons, as well as having an ample supply of food. In some territories, having a safe place to retreat to and gather your wits about you will determine your outcome in hostile territory.

The Cons: If the tribe you have formed an alliance with takes over, or already controls a large part of the territory, you will eventually have to break the alliance and take the tribe on in battle. If he has been busy conquering the land and gathering his resources, you will have a tough fight ahead of you.

NOTE: This game requires lots of exploration, and it will take you some time to become familiar with and effectively use every option this game has to offer—Rome was not built in a day. This manual will give you the basic foundations in your quest to rule the world. Manage your army, your settlements, and your resources as well as you can. Your leadership and management skills will determine if you truly have the right stuff to be a **POWERMONGER**.



TECHNICAL SUPPORT

If you have questions about the program, our Technical Support Department can help. If your question isn't urgent, please write to us at:

Electronic Arts Technical Support
P.O. Box 7578
San Mateo, CA 94403-7578

Please be sure to include the following information in your letter:

- Product name
- Type of computer you own
- Any additional system information (like type and make of monitor, video card, printer, modem)
- Type of operating system or DOS version number
- Description of the problem you're having

If you need to talk to someone immediately, call us at (415) 572-ARTS Monday through Friday between 8:30 am and 4:30 pm, Pacific Time. Please have the above information ready when you call. This will help us answer your question in the shortest possible time.

If you live outside of the United States, you can contact one of our other offices.

In the United Kingdom, contact: Electronic Arts Limited, P.O. Box 835, Slough SL3 8YN, UK. Phone (044) 753 46465.

In Australia, contact: EAE (ECP), 4/52 Lawrence Drive, Nerang 4211, Queensland, Australia. Phone: (75) 963-488.

Limited Warranty

Electronic Arts ("EA") provides to the original purchaser of the computer software product, for a period of ninety (90) days from the date of original purchase (the "Warranty Period"), the following limited warranties:

Media — EA warrants that, under normal use, the magnetic media and the packaging provided with it are free from defects in materials and workmanship.

Software — EA warrants that the software, as originally purchased, will perform substantially in conformance with the specifications set forth in the packaging and in the user manual.

Warranty Claims

To make a warranty claim under this limited warranty, please return the product to the point of purchase, accompanied by proof of purchase, your name, your return address, and a statement of the

defect. OR send the disk(s) to us at the above address within 90 days of purchase. Include a copy of the dated purchase receipt, your name, your return address, and a statement of the defect. EA or its authorized dealer will, at our option, repair or replace the product and return it to you (postage pre-paid) or issue you with a credit equal to the purchase price.

To replace defective media after the 90-day warranty period has expired, send the original disk(s) to the above address. Enclose a statement of the defect, your name, your return address, and a check or money order for \$7.50.

The foregoing states the purchaser's sole and exclusive remedy for any breach of warranty with respect to the software product.

Warranty Exclusions

EA expressly disclaims any implied warranties with respect to the media and the software, including warranties of merchantability or fitness for a particular purpose. Any warranties implied by law are limited in duration to the warranty period. Some states do not allow limitations on the duration of an implied warranty, so the above limitations may not apply to you. This warranty gives you specific legal rights. You may also have other rights which vary from state to state.

Limitation on Damages

EA shall not in any case be liable for incidental, consequential, or other indirect damages arising from any claim under this agreement, even if EA or its agents have been advised of the possibility of such damages. Some states do not allow the exclusion or limitation of incidental or consequential damages, so the above limitation or exclusion may not apply to you.

NOTICE

ELECTRONIC ARTS RESERVES THE RIGHT TO MAKE IMPROVEMENTS IN THE PRODUCT DESCRIBED IN THIS MANUAL AT ANY TIME AND WITHOUT NOTICE.

THIS MANUAL, AND THE SOFTWARE DESCRIBED IN THIS MANUAL, IS COPYRIGHTED. ALL RIGHTS ARE RESERVED. NO PART OF THIS MANUAL OR THE DESCRIBED SOFTWARE MAY BE COPIED, REPRODUCED, TRANSLATED OR REDUCED TO ANY ELECTRONIC MEDIUM OR MACHINE-READABLE FORM WITHOUT THE PRIOR WRITTEN CONSENT OF ELECTRONIC ARTS, P. O. BOX 7578, SAN MATEO, CALIFORNIA 94403-7578, ATTN: CUSTOMER SERVICE.

ELECTRONIC ARTS MAKES NO WARRANTIES, EXPRESS OR IMPLIED, WITH RESPECT TO THIS MANUAL, ITS QUALITY, MERCHANTABILITY OR FITNESS FOR ANY PARTICULAR PURPOSE. THIS MANUAL IS PROVIDED "AS IS." ELECTRONIC ARTS MAKES CERTAIN LIMITED WARRANTIES WITH REGARD TO THE SOFTWARE AND THE MEDIA FOR THE SOFTWARE. PLEASE SEE THE ELECTRONIC ARTS LIMITED WARRANTY.

Unless indicated otherwise, all software and documentation is

© 1990 Electronic Arts. All Rights Reserved.



CREDITS

Game Design & Programming Bullfrog Productions

Producer Jocelyn Ellis

Assistant Producers Scott Probin and
Rupert Easterbrook

Product Management Chris Thompson and
Lesley Mansford

Art Direction Nancy Fong

Package Design Spiegelman & Associates

Package Illustration Pete Scanlan

Testing Jeff Haas and
Kevin Shrapnell

Documentation Michael Humes

Production Corinne Mah & Co.

This manual and the software described in it are copyrighted, with all rights reserved. Under the copyright laws, this manual or the software may not be copied, in whole or part, without written consent of Electronic Arts, except in the normal use of the software or to make a backup copy of the software. The same proprietary and copyright notices must be affixed to any permitted copies as were affixed to the original. This exception does not allow copies to be made for others, whether or not sold, but all of the material purchased (with all backup copies) may be sold, given, or loaned to another person. Under the law, copying includes translating into another language or format.

You may use the software on any computer owned by you, but extra copies cannot be made for this purpose.